

Zone of Theoretical Visibility (ZTV) Map indicating areas with a theoretical view of the windfarm at Derrybrien, in combination with the existing Sonnagh Old windfarm

Derrybrien Turbine Locations



Sonnagh Old Turbine Locations



Wind Farms Visible

 Derrybrien Only

 Both Windfarms Visible

 Sonnagh Old Only

Photograph Location



Derrybrien 25km Extent



FINAL

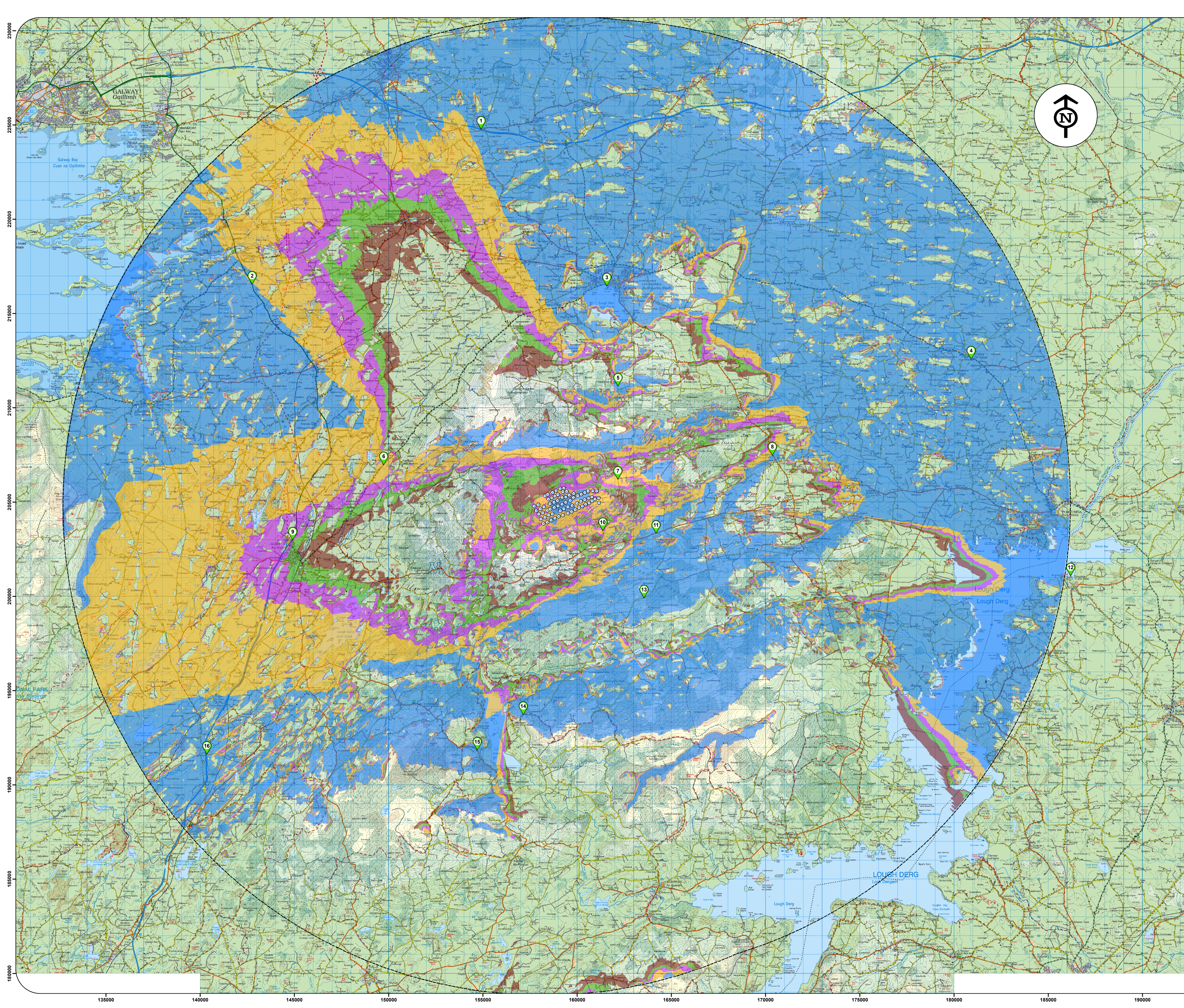
Date: 1st November 2018

Scale when printed at A1 Size = 1:90,000

1 centimeter = 900 meters

Notes:

- Theoretical visibility is based on an observer being able to see at least a full turbine blade (26m).
- Theoretical visibility is based on an observer eye level of 2m above ground level.
- Calculation does not account for screening due to vegetation, forestry, buildings or any other similar forms of screening.
- Calculation has been run using Ordnance Survey 10m DTM height data.
- Earth curvature and light refraction has been included in this calculation.



Zone of Theoretical Visibility (ZTV) Map indicating areas with a theoretical view of the windfarm at Derrybrien, Co. Galway

Calculated to Hub Height (49m)

Derrybrien Turbine Locations



Number of Turbines Visible

- 3.6% 1 - 14
- 3.3% 15 - 28
- 5.2% 29 - 42
- 12.9% 43 - 56
- 37.7% 57 - 70

Photograph Location



Derrybrien 25km Extent



FINAL

Date: 1st November 2018

Scale when printed at A1 Size = 1:90,000

1 centimeter = 900 meters

- Notes:
- Theoretical visibility is based on an observer being able to see at least a full turbine blade (26m).
 - Theoretical visibility is based on an observer eye level of 2m above ground level.
 - Calculation does not account for screening due to vegetation, forestry, buildings or any other similar forms of screening.
 - Calculation has been run using Ordnance Survey 10m DTM height data.
 - Earth curvature and light refraction has been included in this calculation.

